



- Detection of Earth Leakage Current
- Highly sensitive - Detects leakage current from 5mA
- Compact, flexible design, reliable and accurate
- Operating Current : Range 10mA - 30A
- Inner Diameter : 35, 70, 120, 210, 310mm
- For use with Megacon's KPM162x, KCM162x, KPM362x, KCM362x, KPM363x, KCM363x, KRM162x and ISOPAK series
- Panel Mount

## Specifications

### Input Specifications:

Leakage Current Range: 10mA - 30A

### Environmental Specifications Temperature:

Operating Temperature: 0 to 55°C

Storage Temperature: -20 to 75°C

Humidity (non - condensing): Upto 95% RH

### Mechanical Specifications:

Mounting: Panel

Wire Size (max): 0.2 - 1.5mm<sup>2</sup>  
(AWG : 24 - 14)

Screw Tightening Torque: 0.5 N.M

Type	Inner Diameter	Weight
CBCT-35-1	35mm	90g
CBCT-70-1	70mm	151g
CBCT-120-1	120mm	257g
CBCT-210-1	210mm	734g
CBCT-310-1	310mm	1150g

## Dimensions

CBCT Tupe Part No.	Dimensions (mm)						
	d	D	H	W	W1	W2	W3
CBCT-35-1	35	71	91	15	40	20	53
CBCT-70-1	70	105	131	15	40	20	87
CBCT-120-1	120	157	184	15	40	20	122
CBCT-210-1	210	268	270	-	55	25	200
CBCT-310-1	310	377	380	-	65	25	300
STD. Tol.	5-6	2-3		1,5-2			



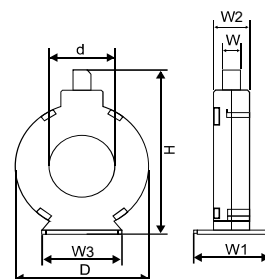
CBCT-120-1



CBCT-70-1



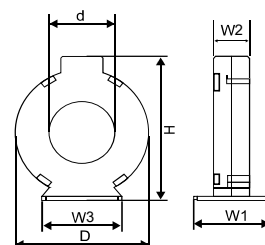
CBCT-35-1



CBCT-310-1



CBCT-210-1



(\*) All sizes and weights are approximate and may vary (+/- few mm / kg) due to size of the transformer

The MEGACON policy is one of continuous improvement, consequently equipment supplied may vary in detail from this publication.